

SKID STEER FORK AND FRAMES



F5300

**STANDARD & CUSTOM
SIZES AVAILABLE**

Arrow Pallet Fork and Frames feature a heavy-duty frame engineered to sustain the impact of everyday use. Our forks are made of a premium-grade steel that outperforms the competition. Choose from Class II and Class III variations to find the right fit for your machine. Arrow Pallet Fork and Frames come in 36-inch to 84-inch widths, with and without hydraulics and capacities from 1,500 to 9,000 lbs.

Compatible with

Skid Steers
Walk-behinds
Shaft Mount
Bale Spear
Ag & Utility
Walkthrough
Extra Wide
Fork Positioning

Outlast the Competition

The heavy-duty steel construction is built to work as hard as you do.

A Grade Above the Rest

Arrow Forks outperformed those of our competitors in a recent industry study.



F5000



F5100CB



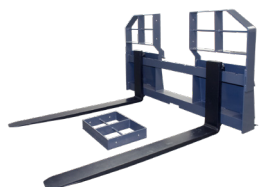
F5400



F5100G



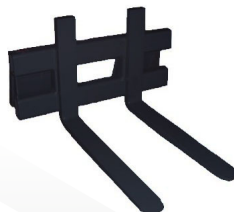
F5200HD



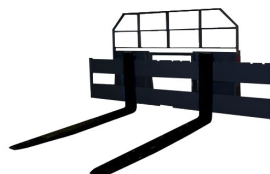
F5000WT



F5100CB-WT



F4300



F5560
F5572
F5584

TELEHANDLER FORK AND FRAMES

Arrow's Telehandler Pallet Forks fit almost any brand machine with a quick-coupler or pin-on mount. Highly customizable, standard builds offer a wide range of frame and fork sizes and styles. The heavy-duty construction with an extended load backrest offers excellent load stability and operator visibility. Custom-built options allow for unlimited possibilities including swinging forks, tilting style frames, ITA style, fork positioners and grapple arms (single or dual).



F6400

**STANDARD & CUSTOM
SIZES AVAILABLE**

Heavy-Duty Construction

Options range from 6,000-pound to 40,000-pound capacities all made from Arrow's premium, high-strength boron-carbon alloy steel.

Improved Operations

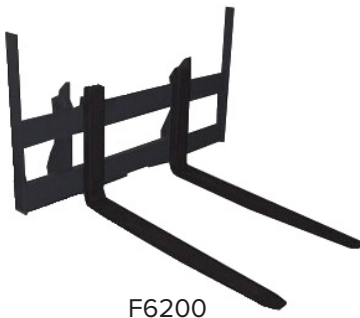
The extended load backrest offers excellent load stability and operator visibility.

Infinite Options

Choose from a wide variety of fork and frame sizes and styles, or customize for unique requirements.

Twist and Turn

Arrow can add swing carriages, fork positioners, side shift and side tilt to most Telehandler Fork and Frame assemblies.



F6200



F6300G1



F6300G2

CALL TODAY FOR DETAILS AND PRICING

WHEEL LOADER FORK AND FRAMES

Arrow's heavy-duty Wheel Loader Fork and Frames are ideal for handling long lengths of pipe, structural steel, beams, lumber or any large objects having widths up to 144 inches. Low-profile assemblies are designed for maximum visibility. Can be used on most models of wheel loaders with quick couplers or pin-on mounts.



**STANDARD & CUSTOM
SIZES AVAILABLE**

Heavy Duty Construction

Options range from 6,000-pound to 40,000-pound capacities, all made from Arrow's premium, high-strength boron-carbon alloy steel.

Improved Operations

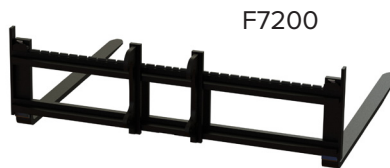
The extended load backrest offers excellent load stability and operator visibility.

Infinite Options

Choose from a wide variety of frame and fork sizes and styles, or customize for unique requirements.

Twist and Turn

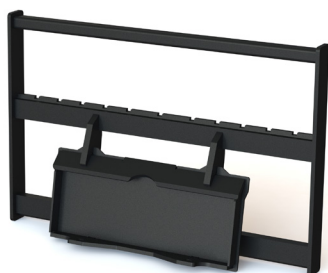
Arrow can add swing carriages, fork positioners, grapple arms, side shift and side tilt to most Wheel Loader Fork and Frame assemblies.



CALL TODAY TO DESIGN YOUR CUSTOM FORKS

MINI FORK AND FRAMES

F3036
F3040



1003171-3636

Max out your walk-behind skid steer or tractor with Arrow's Mini Pallet Forks. While under 200 pounds in weight, they can still deliver excellent service with their 1,500-pound capacity assemblies. They come standard with a mini universal coupler, however, other coupler/hitches are available. This durable frame accepts standard ITA Class II Forks.

PART #	WIDTH	WEIGHT	CAPACITY	ADJUSTABLE FORK SPREAD
F3036*	36 in	126 lb	1,500 lb	0-35 in
F3040*	40 in	137 lb	1,500 lb	0-40 in
1003171-3636	40 in	161 lb	3,000 lb	0-40 in
1003172-3636	36 in	149 lb	3,000 lb	0-35 in

* Comes standard with mini universal coupler, however, other couplers or pin-on hitches are available.

AG FRAMES

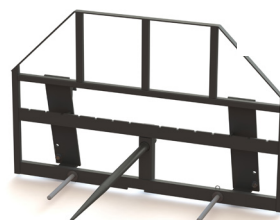
Arrow's Ag Frame is designed specifically for customers in the Ag industry – comes standard with quick coupler plates to attach to a tractor, or can be made to direct pin-on to loader arms. Don't let the lightweight design fool you – this frame can lift up to 4,500 lbs. The backrest stabilizes loads and protects operators from errant debris.

Part #	Width	Weight	Capacity	Adjustable Fork Spread
F5847-121	50 in	192 lb	1,500 lb	0-47 in
F5860-121	63 in	229 lb	1,500 lb	0-60 in
F5000-204	50 in	185 lb	2,400 lb	0-47 in
F5947-121	50 in	234 lb	1,500 lb	0-47 in
F5960-121	63 in	271 lb	1,500 lb	0-60 in

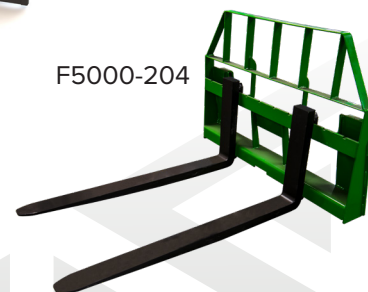
F5847-121
F5860-121



F5947-121
F5960-121



F5000-204



AMHP-SS-SSFFTHFF-2021-02-22